

Excellence in Scientific Software

Improve the performance, efficiency and scalability of selected software packages of high importance for bio-molecular Life Sciences research on next-generation HPC systems

Key Software



GROMACS
FAST. FLEXIBLE. FREE.



ADDock
High-Ambiguity Driven Docking



Excellence in Usability

Improve the usability of ICT technologies for biomolecular researchers, both in academia and industry

According to user needs, efficient workflow environments with associated data handling and integration of simulation and analysis codes will be devised.

Key Workflows & Platforms



Open PHACTS



Galaxy
PROJECT



Open for Innovation

KNIME



Apache Taverna

Excellence in Support

Promote best practices and train end users to make the best use of both the software and computational infrastructure



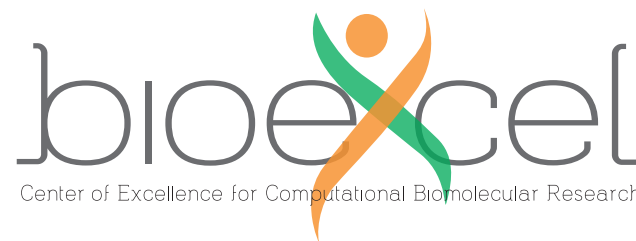
*Are you an end user of our applications?
Do you develop related software?
Are you a resource provider?*

Get in touch with us to learn more about the various ways that BioExcel can improve your work:

www.bioexcel.eu



BioExcel is funded by the European Union Horizon2020 program under grant agreement number 675728.



Powering computational biomolecular research

The BioExcel Center of Excellence supports academia and industry with the usage of advanced techniques for high-end computing.

bioexcel.eu

Supporting academia and industry with the usage of advanced techniques for high-end computing

Much of the current Life Sciences research relies on intensive biomolecular modelling and simulation. As a result of this, both academic and industrial researchers are facing significant challenges when it comes to applying **best practices** for **optimal resource usage** and **workflow productivity**, and to finding a **faster path to achieve results**.

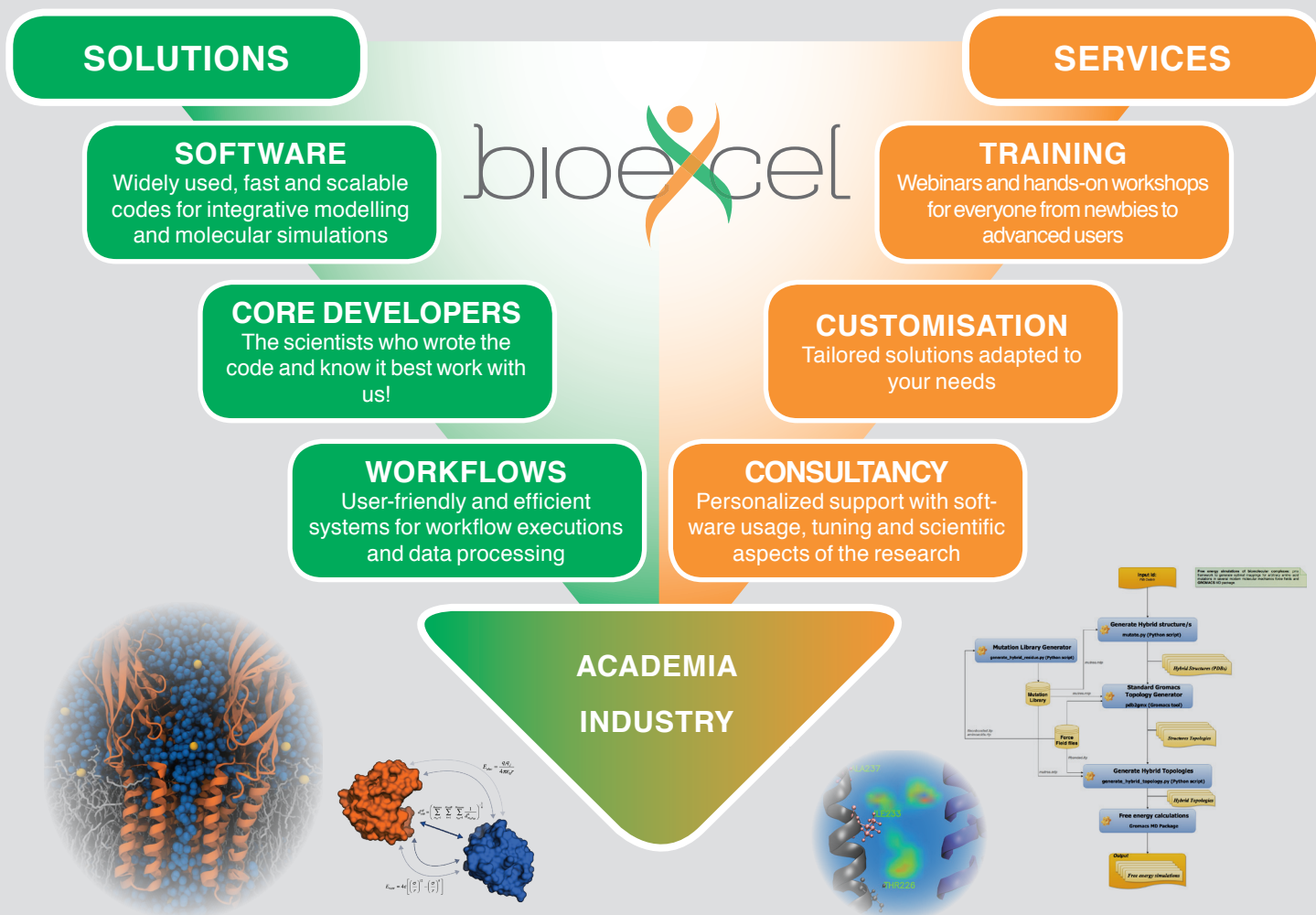
High-performance computing (**HPC**) and high-throughput computing (**HTC**) techniques have now reached a level of maturity in widely used codes and platforms, but taking full advantage of these requires training and guidance by experts. The services ecosystem required for that is presently inadequate, so a suitable infrastructure needs to be set up in a sustainable way.

The **BioExcel Center of Excellence (CoE)** was established to provide the necessary **solutions** for **long-term support** of the biomolecular research communities: fast and **scalable software**, user-friendly **automation workflows** and a support base of **expert core developers**. The main **services** offered by the center include hands-on **training**, tailored **customization** of code and personalized **consultancy** support.

User driven research and development

The BioExcel CoE actively engages with a number of **interest groups**, formed by members of **academic and industrial communities**, which lay the foundation of the long-term basis for **user-driven governance** of the center:

- academic and non-profit end users,
- industrial end users,
- software vendors and academic code providers,
- non-profit and commercial resource providers, and
- related international projects and initiatives.



Partners

